

# Preparing Students to Take Public Transit

**As a parent, caregiver or educator, you can play a key role in helping students learn how to use Metro Transit.**

Being confident and comfortable riding public transit provides an important life skill for students that can build their lifelong independence. Preparing ahead of time for transit travel goes a long way. Whether your child is riding the bus to school or you're taking a class on a transit field trip, **here's what to remember!**

1

## **Plan the transit route to and from the destination.**

Use Google Maps transit feature. There might be several options available depending on the desired walking or biking distance to the stop, route availability, and transfers. Don't forget to plan the return journey as well!



2

## **Practice riding the route before the trip or first day of school. See the basics on the next page.**

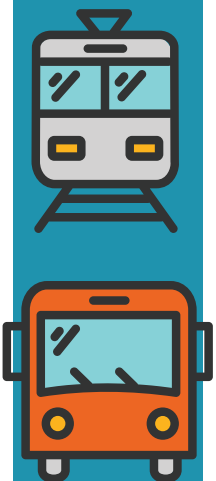
They say "practice makes perfect," and it's true! A trial run before the field trip or first day of school can help you and/or your student get oriented.



3

## **Have a game plan if the trip doesn't go as planned.**

It's ok to get lost. Have a plan if a transit trip doesn't go as expected. Don't hesitate to rely on the bus driver for help getting back in the right direction. It may be as simple as going in the opposite direction, crossing the street to hop back on the bus in the other direction or switching sides of the train platform.



# The Basics of Riding the Bus and Train

Arrive at the bus stop or train station five minutes early.

Be courteous to others by allowing people with mobility aid devices to board first and access priority seating.



Make sure the approaching bus driver can see you waiting. Give a friendly hand wave to signal that you want to get on.

Double check the route number before getting on.

Enter through the front and exit through the back, tapping your transit card to the Go-To circle on the card reader to pay.

Signal your stop one block ahead of time by pulling the yellow cord or pressing the red button.

Rely on the bus driver for help if lost.

Double check the signage on the platform to ensure correct train direction and correct line.

Tap your transit card to the Go-To circle on the ticket vending machine or card reader at the light rail station to pay.

The train will stop at every station, so there is no need to signal a stop on a train.

## Questions?

**Call Metro Transit:  
612-373-3333 option 2**

Learn more about Move Minnesota: [movemn.org](http://movemn.org)

*move*